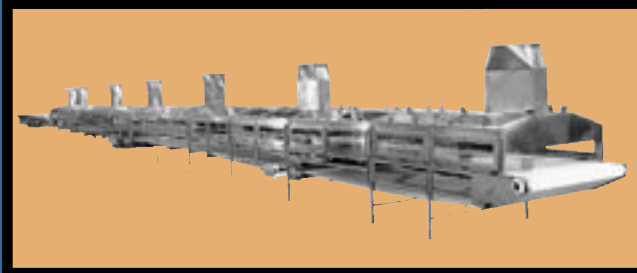
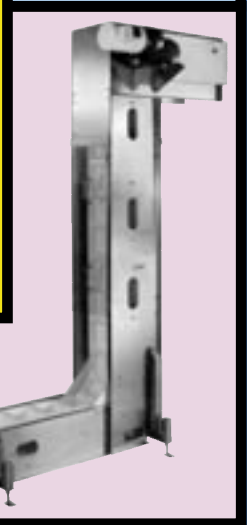
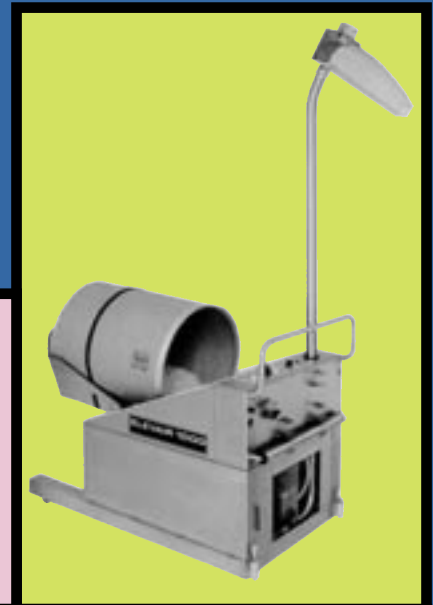
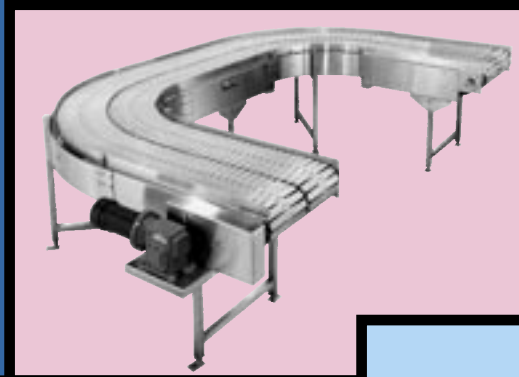
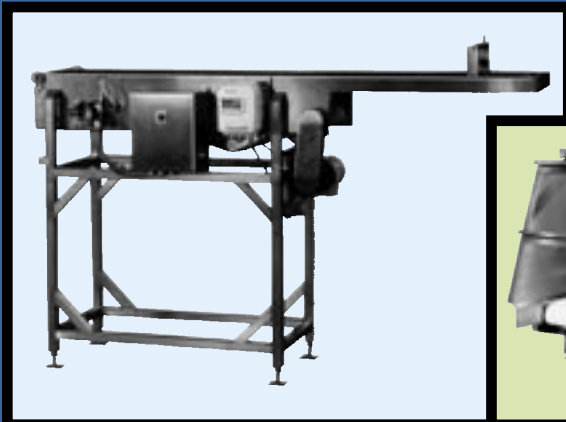




KAMFLEX[®]

Stainless Steel Sanitary Conveyors
for Food & Pharmaceutical Industries

Website: www.kamflex.com
E-mail: kamflex@kamflex.com



**Providing Custom Engineered Stainless Steel Conveyors
to Food & Pharmaceutical Industries for over 30 Years**

Kamflex Corporation

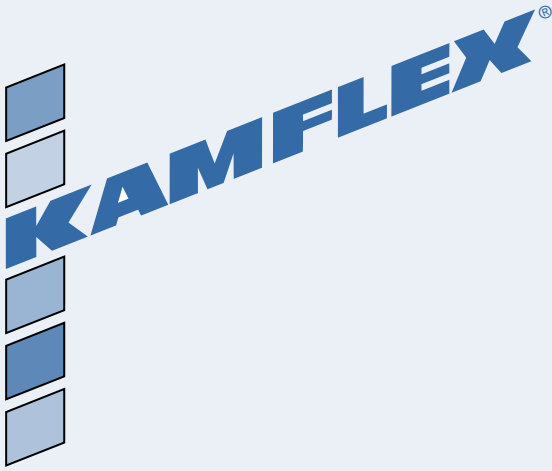
555 Kimberly Drive, Carol Stream, IL 60188-1893 • USA
Phone: 800-323-2440 or 630-682-1555 • Fax: 630-682-9312
E-Mail: kamflex@kamflex.com • Website: www.kamflex.com

Catalog No. 2005A
© Copyright 2005, Kamflex Corp.



***Kamflex Quality
...Since 1974***





...a tradition of excellence since 1974

Since 1974, Kamflex has specialized exclusively in the design and manufacture of stainless steel sanitary conveyors for food and pharmaceutical industries. This focused strategy has enabled us to develop custom engineered products of highest quality for our customers in cereals and snack foods, bakeries, meat and poultry, cheese and dairy, processed and frozen foods, beverages; as well as cosmetics, pharmaceutical and surgical products industries. Kamflex serves a majority of Fortune 500 companies in these industries, as well as numerous smaller companies on a continuing, long term basis.

For over twenty five years, we have invested our resources towards one simple goal—to become highly effective and efficient in meeting our customer needs. We have a large, modern facility with CNC equipment for metal fabrication, an extensive network of computer workstations for engineering/CAD use, unique software to automate numerous pricing, engineering and programming tasks; and a team of competent, dedicated people willing to go that extra mile. We believe, you will be pleased with the combination of quality, value and prompt service Kamflex offers.

With our expanded Quick-Ship Program, a broad range of pre-engineered conveyors can be manufactured to order and shipped within ten working days. Now you can have Kamflex quality, quick delivery and very competitive prices—all in one convenient transaction. Please contact one of our sales engineers for helpful assistance on your next conveyor project. We look forward to serving you.

Table of Contents

• Fabric Belt Conveyors.....	Page 4	• Lazy Susans / Rotary Turn Tables	Page 18
• Plastic Belt Conveyors.....	Page 8	• “Elevair” Pneumatic Conveyor.....	Page 19
• Wire Belt Conveyors	Page 12	• Special Purpose Systems	Page 20
• Storage Conveyor Systems		• Common Optional Items.....	Page 22
(with fabric or plastic belts)	Page 16	• Regulatory Acceptance	Page 23
• Vertical Belt Conveyors		• Quick-Ship Program	Back Cover
(with fabric or plastic belts)	Page 17		

Fabric Belt Conveyors

These conveyors are custom-engineered for a wide range of product handling applications. Frames can be flat or troughed. Conveying surface may be smooth, textured, cleated, or with integral sidewalls. Belting material choices include neoprene, urethane, PVC, Teflon, and others—typically with a polyester fabric base.

Features and Benefits:

More Sanitary—

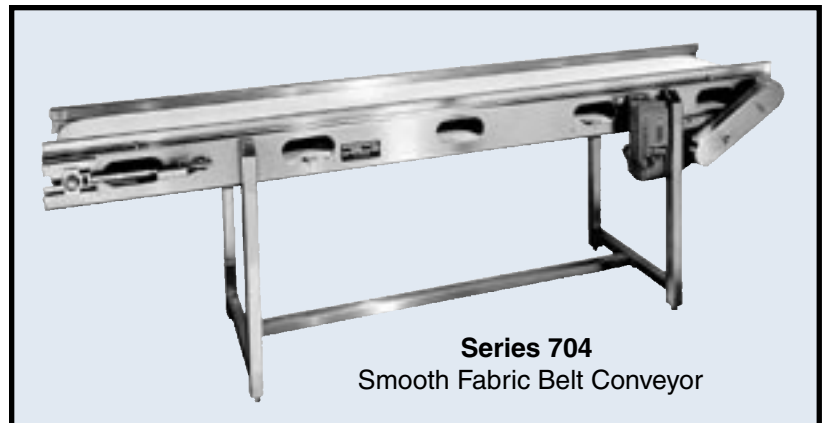
- Quick-belt tension release
- Standoffs on legs with angled end-caps
- “Tool-free” removable side rails
- 304 or 316 stainless frames, polished to a No. 4 finish
- Continuous TIG welds—ground & polished

Better Functionality—

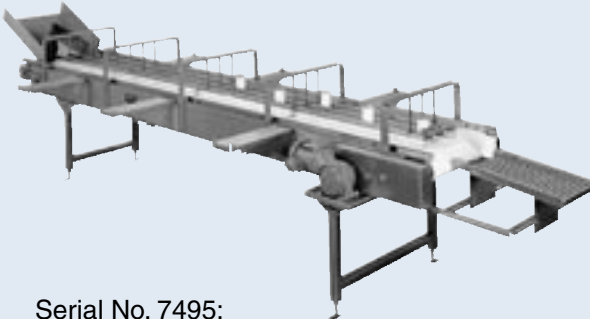
- Stainless steel bearing housings with non-re-lube inserts
- Vacuum breakers
- 2-inch square tubing supports
- 12-gauge formed frames
- 10-gauge formed motor platforms
- Stainless steel pulleys (standard)

Typical Options:

Common options include side rails, feed hopper, top covers, catch pans, belt scrapper, discharge chute, casters, work shelves, transfer plates, motorized pulley or hydraulic motor drive.



Fabric Belt Conveyors Examples



Serial No. 7495:
Pack off conveyor for beef jerky line. Includes infeed slide, product & container lane dividers and shelves for scales.

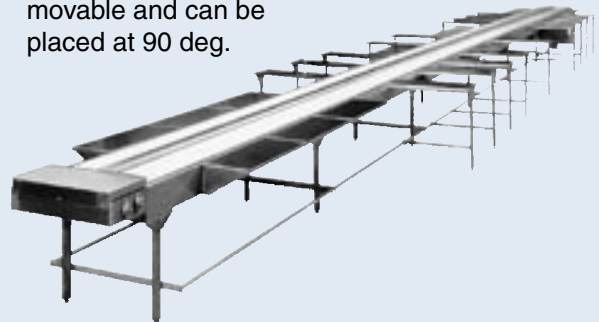
Serial No. 92117: A system with barrel lift, large hopper with vibratory feeder and cleated belt conveyor for product transfer to packaging machine.



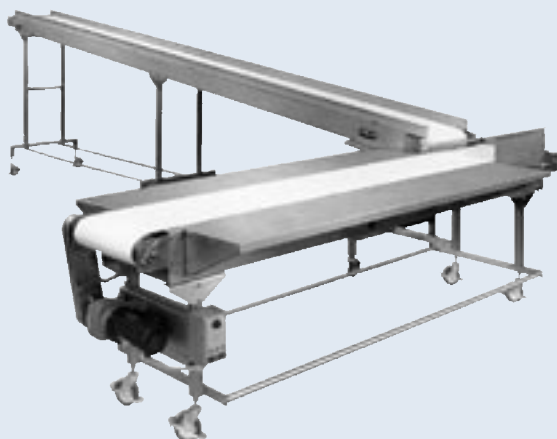
Serial No. 90156:
Frozen beef block unwrapping table and cleated belt conveyor for transferring blocks to extruder.



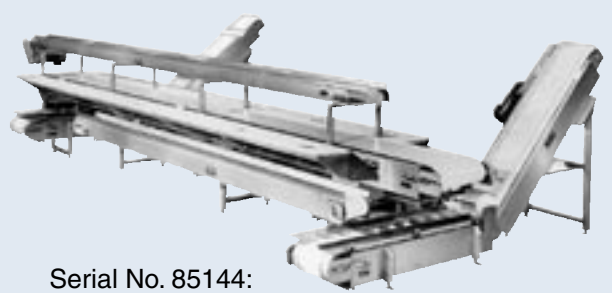
Serial No. 7994: Two 12" belts x 80 ft. long conveyor for assembly of surgical products kits. Work shelves are movable and can be placed at 90 deg.

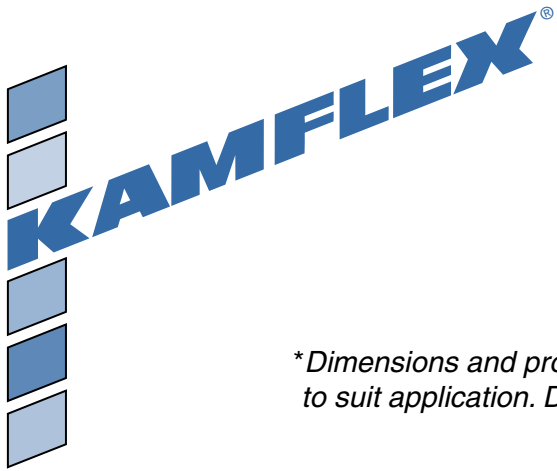


Serial No. 8033: A two conveyor transfer and packing line for filling serving trays of various Hors D'oeuvres.



Serial No. 85144:
A six conveyor boning, trimming & portion control line. Lower conveyors carry away trimmings dropped thru holes in cutting boards.

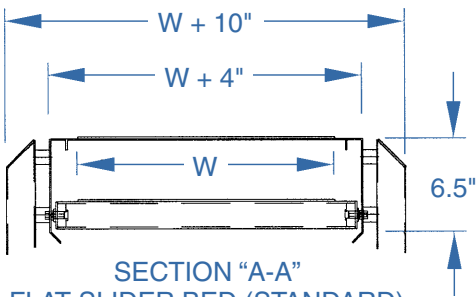
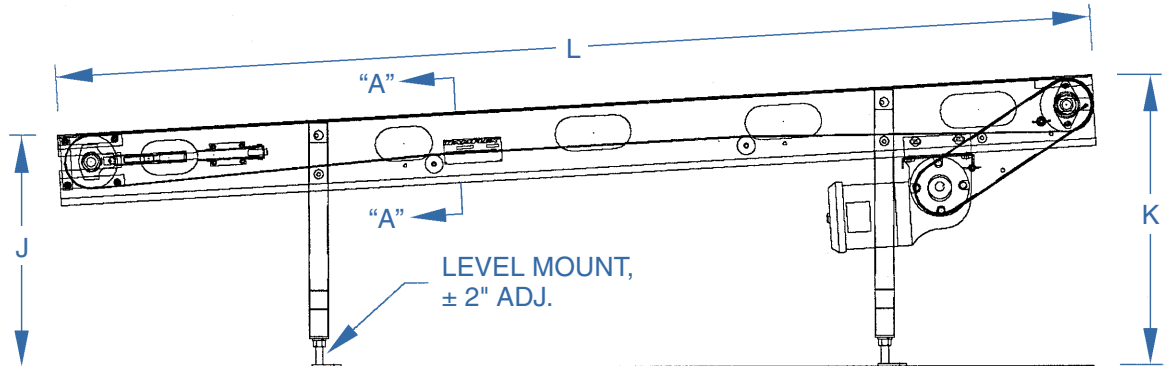




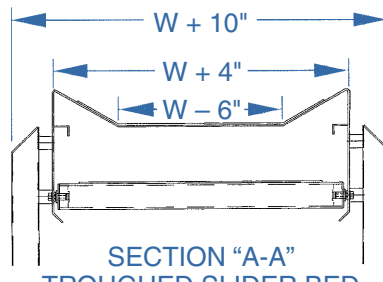
Fabric Belt Conveyor Typical Design Specifications

**Dimensions and proportions shown are typical, but may vary to suit application. Design specifications subject to change without notice.*

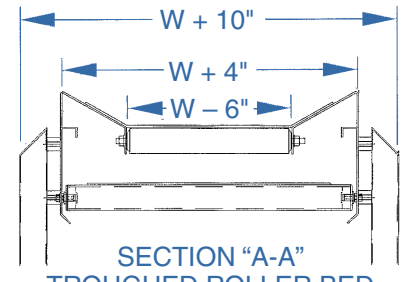
Series 704, Smooth Fabric Belt Conveyor



SECTION "A-A"
FLAT SLIDER BED (STANDARD)
(W represents belt width)



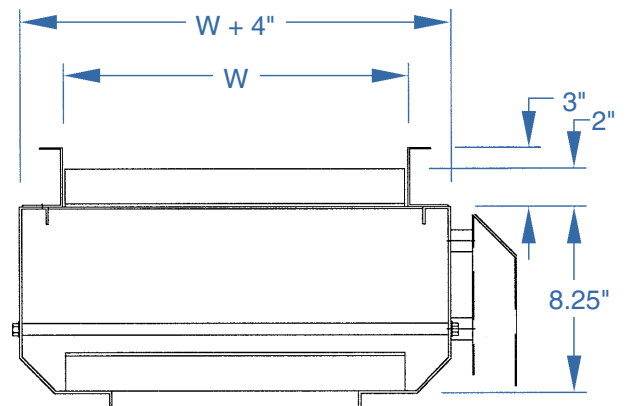
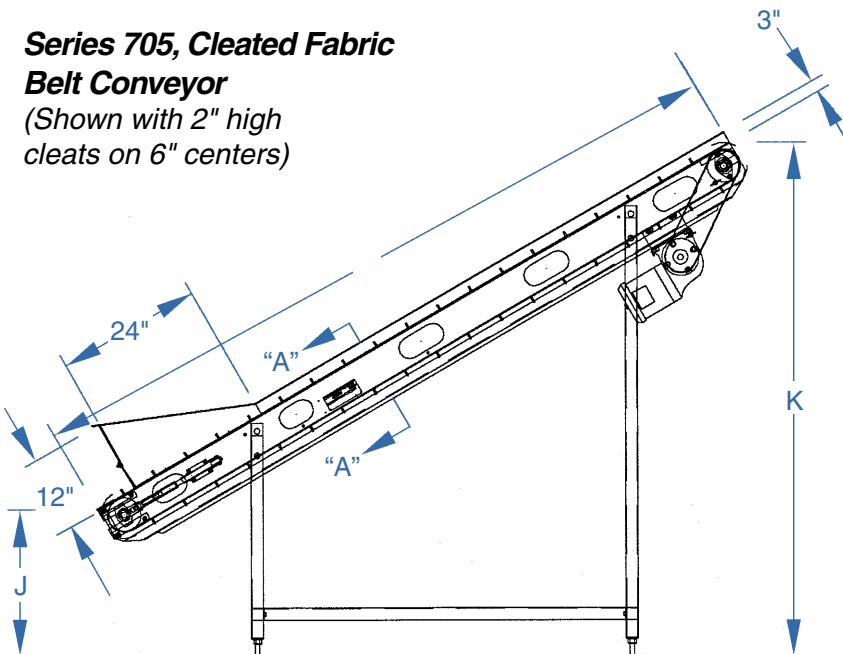
SECTION "A-A"
TROUGHED SLIDER BED
(OPTIONAL)



SECTION "A-A"
TROUGHED ROLLER BED
(OPTIONAL)

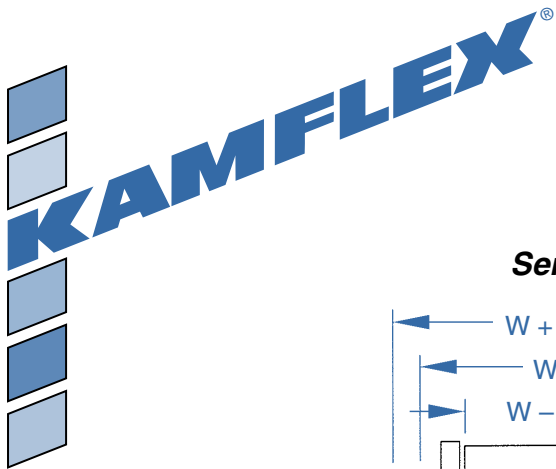
Series 705, Cleated Fabric Belt Conveyor

(Shown with 2" high
cleats on 6" centers)

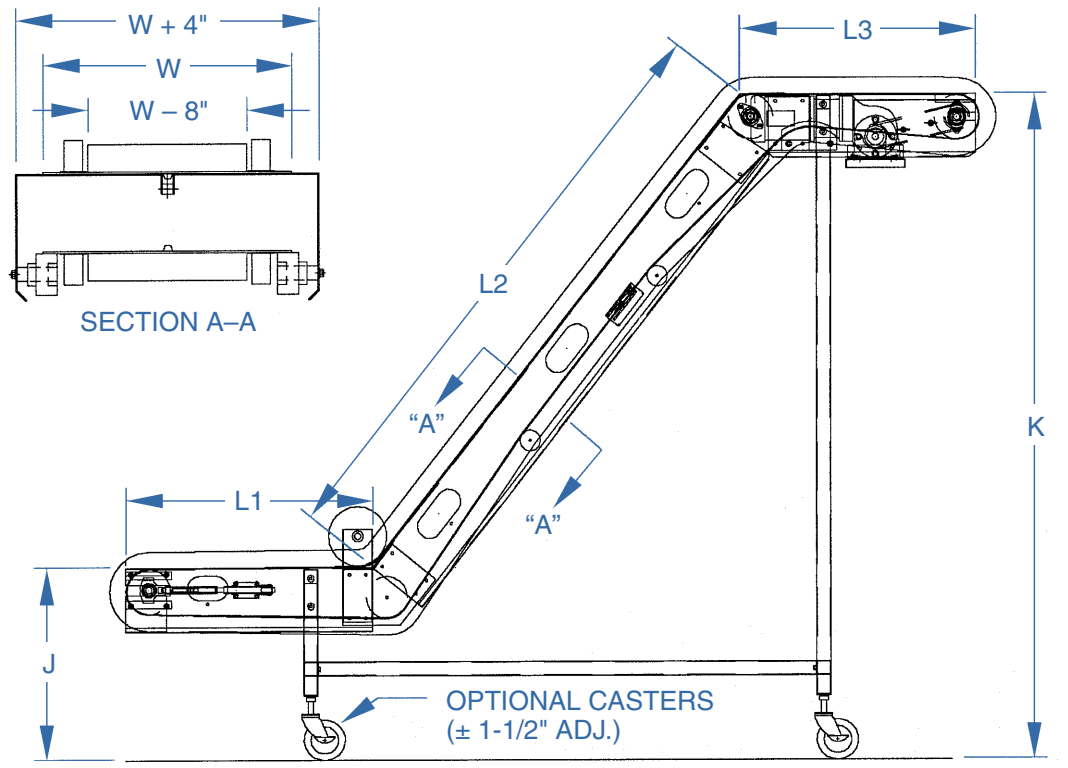


SECTION "A-A"
FLAT SLIDER BED FOR CLEATED BELTS

Fabric Belt Conveyor Typical Design Specifications



Series 715, Corrugated Sidewall Fabric Belt Conveyor



You may find it helpful to make a photo copy of this and facing page, mark-up the drawings, fill in quote request information and fax it to us. For application assistance or to discuss design alternatives, please feel free to call one of our sales engineers.

Quote Request Information:

Item No _____

Item Quantity—identical units _____

Series (704, 705 or 715) _____

Overall Length—L—feet, inches
(For 715, specify L1, L2 & L3) _____

Overall Belt Width—W—inches
(12, 18 & 24"—generally faster delivery) _____

Belt Cover Material
(Neoprene, PVC, Urethane, Teflon) _____

For cleated belts—cleat height & spacing _____

Belt Speed—Feet per Minute
(For variable speed, give Min. & Max.) _____

Infeed Elevation—J—inches _____

Discharge Elevation—K- inches _____

Plant Electrical Power
(Volts, Phase, Hertz) _____

Conveyor subject to regular washdown? ____ No, ____ Yes

Product description & sizes _____

Product Transfer Rate—Pounds per Hour..... _____

Product Density—Pounds per Cubic Foot..... _____

How will product be loaded onto this conveyor? _____

How will product be taken away from this conveyor? _____

Options Required: (Common options shown on page 22)

- | | |
|---|--|
| <input type="checkbox"/> Side Rails, ____" high | <input type="checkbox"/> Top Cover, ____" high |
| <input type="checkbox"/> Back Stop | <input type="checkbox"/> Discharge Chute |
| <input type="checkbox"/> Drip Pan | <input type="checkbox"/> Foot Rests |
| <input type="checkbox"/> Discharge Slide | <input type="checkbox"/> Motorized Pulley Drive |
| <input type="checkbox"/> Casters | <input type="checkbox"/> Work Shelves/Tables* |
| <input type="checkbox"/> Hopper, ____" high | <input type="checkbox"/> Alternate Drive Location* |
| <input type="checkbox"/> Belt Scraper | <input type="checkbox"/> Troughed Frame Cross Section* |

* Please describe

Kamflex Corporation • 555 Kimberly Drive • Carol Stream, IL 60188 • USA
Phone: 800-323-2440 or 630-682-1555 • Fax: 630-682-9312 • E-Mail: kamflex@kamflex.com
Visit us at our website: www.kamflex.com

Plastic Belt Conveyors Overview

Plastic Belt Conveyors

These conveyors are used for both product transfer and processing applications such as rinsing, cooling, or drying. The conveyors feature belts constructed of molded, modular plastic slats interconnected with plastic rods or stainless pins. They are positively sprocket-driven, providing improved belt tracking and torque transmission. Belting materials include polypropylene, polyethylene, acetal, and high temperature nylon. Surface types include flat top (closed and perforated), open grids, raised ribs, and straight or scooped flights.

Features and Benefits:

More Sanitary—

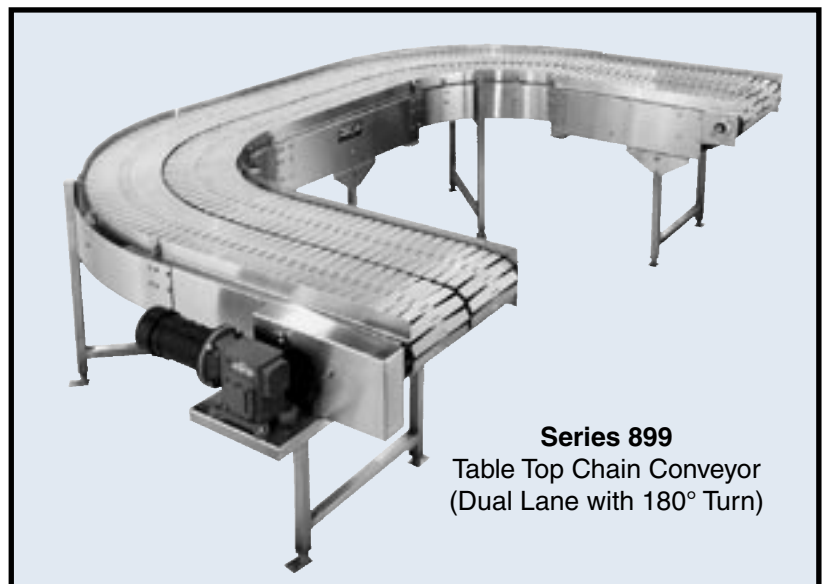
- Standoffs on legs with angled end-caps
- “Tool-free” removable side rails
- 304 or 316 stainless frames, polished to a No. 4 finish
- Continuous TIG welds—ground & polished

Better Functionality—

- Stainless steel bearing housings with no-re-lube inserts
- 2-inch square tubing supports
- 12-gauge formed frames
- 10-gauge formed motor platforms

Typical Options:

Common options include side rails, feed hopper, top covers, catch pans, belt scraper, discharge chute, casters, work shelves, transfer plates or hydraulic motor drive.



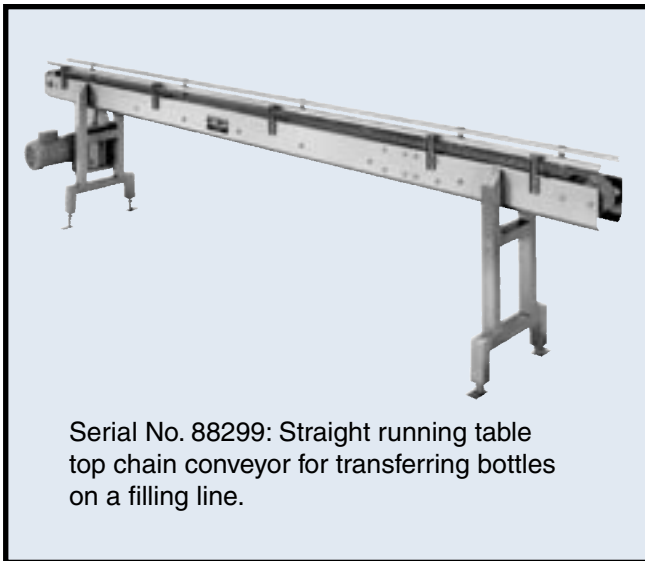
Plastic Belt Conveyors Examples



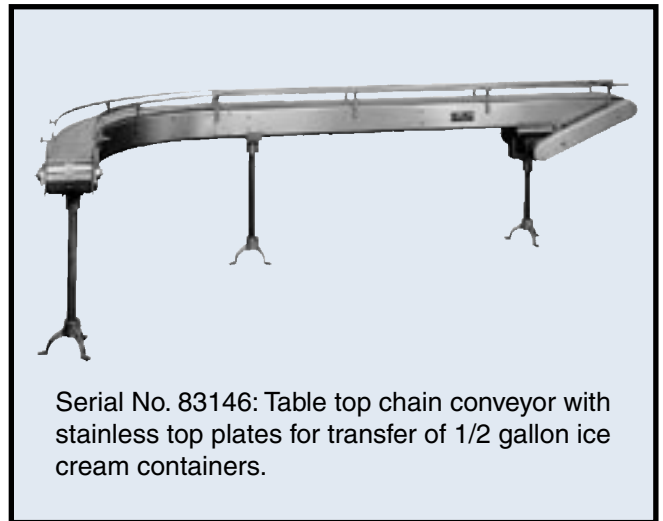
Serial No. 85125: Series 810 cleated plastic belt conveyor to transport shrimp through a water glaze bath prior to freezing.



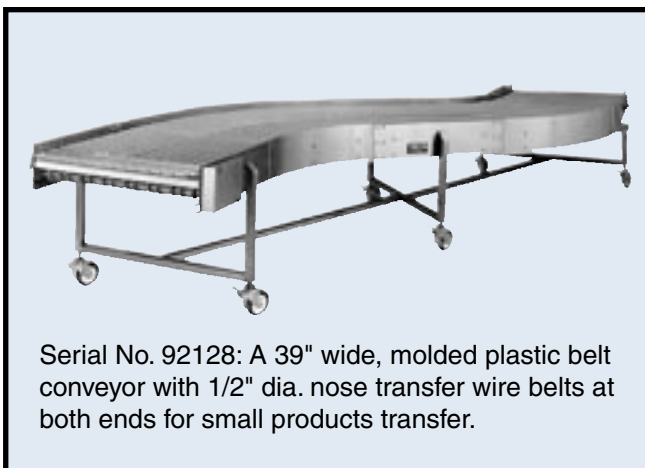
Serial No. 94338: A combination cleated plastic belt conveyor and rotary turn table to carry bags from bagging machine to case filling stations.



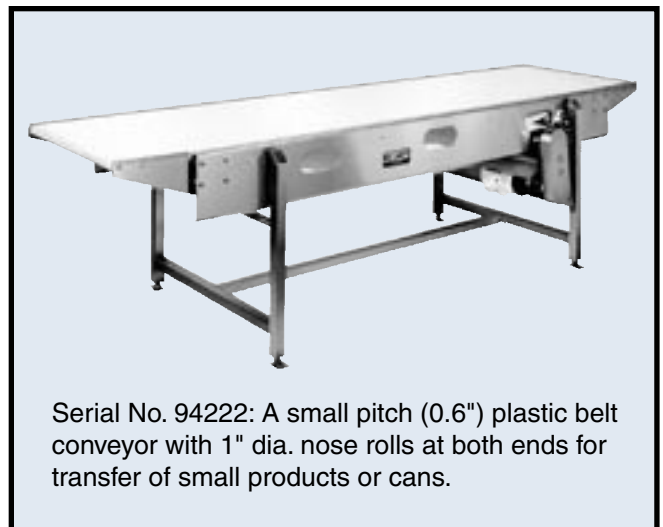
Serial No. 88299: Straight running table top chain conveyor for transferring bottles on a filling line.



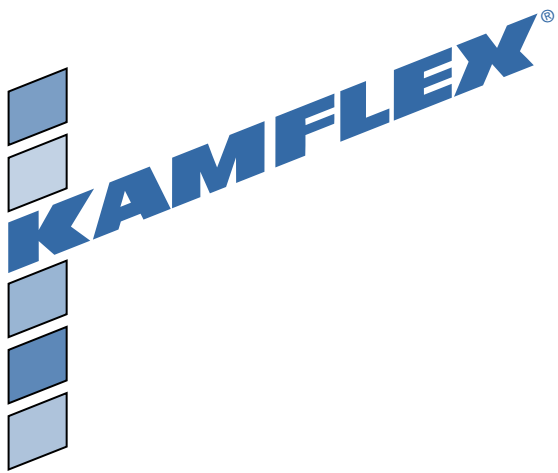
Serial No. 83146: Table top chain conveyor with stainless top plates for transfer of 1/2 gallon ice cream containers.



Serial No. 92128: A 39" wide, molded plastic belt conveyor with 1/2" dia. nose transfer wire belts at both ends for small products transfer.

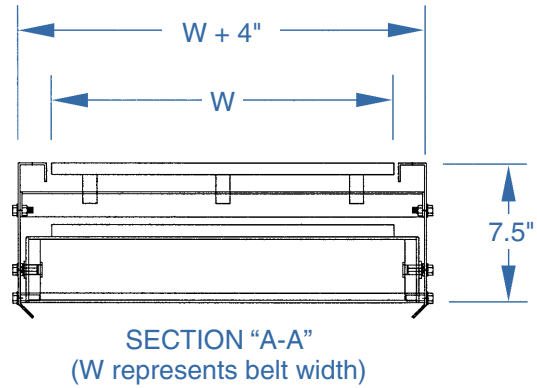


Serial No. 94222: A small pitch (0.6") plastic belt conveyor with 1" dia. nose rolls at both ends for transfer of small products or cans.

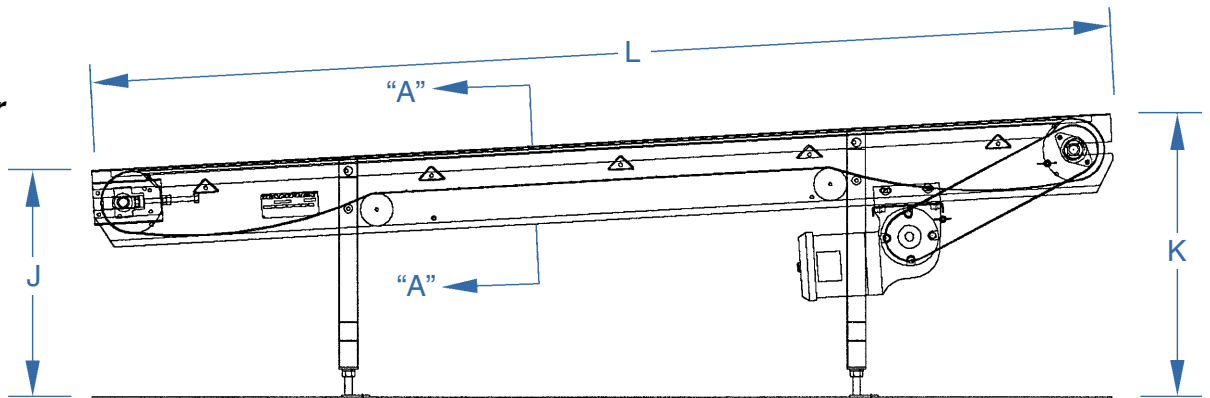


Plastic Belt Conveyor Typical Design Specifications

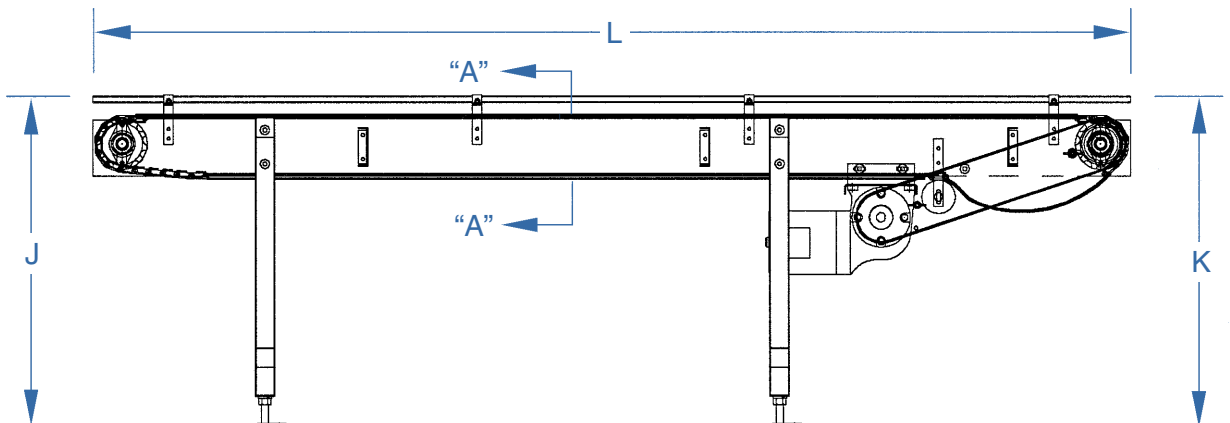
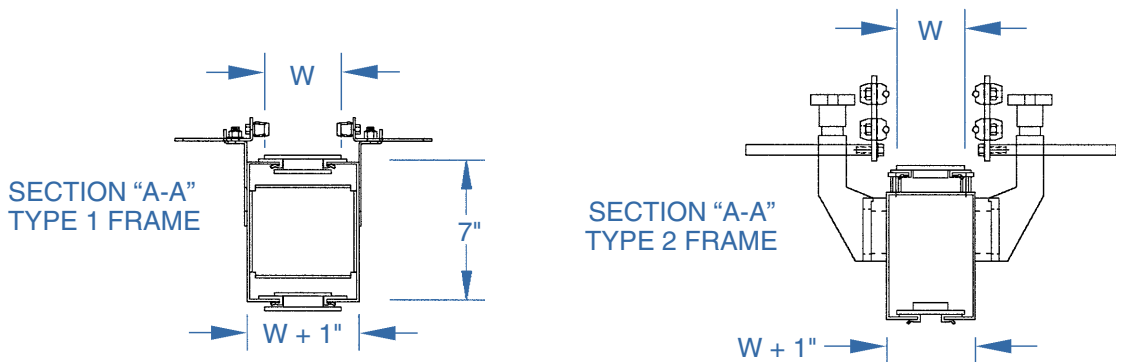
* Dimensions and proportions shown are typical, but may vary to suit application. Design specifications subject to change without notice.



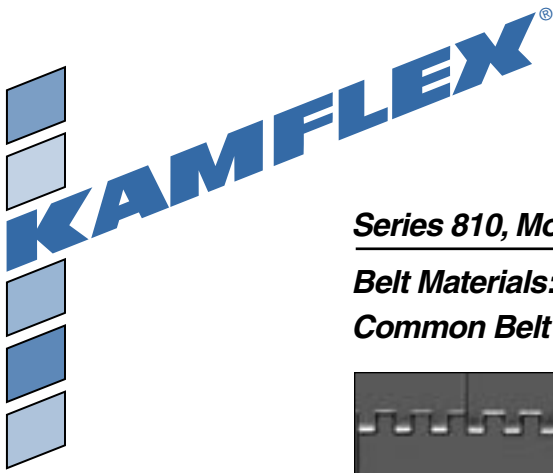
**Series 810,
Molded, Modular
Plastic Belt
Conveyor**



**Series 899,
Tabletop Chain
Plastic Belt
Conveyor**



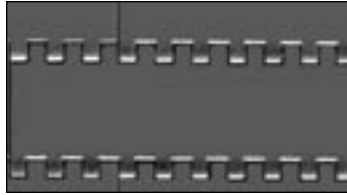
Plastic Belt Conveyor Typical Design Specifications



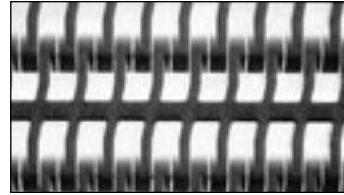
Series 810, Molded, Modular Plastic Belts

Belt Materials: Polypropylene, Polyethylene, Acetal or Nylon.

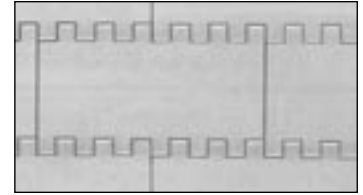
Common Belt Types:



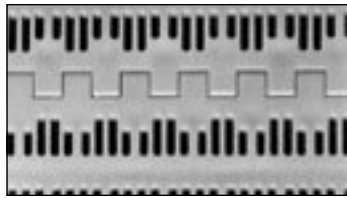
(A) 1" pitch, .384" thick
Flat Top—0% open



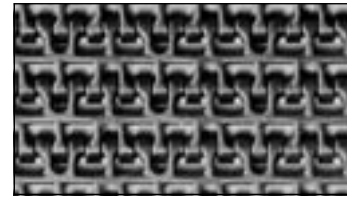
(B) 1" pitch, 0.344" thick
Flush Grid—38% open



(C) 2" pitch, .625" thick
Flat Top—0% open



(D)
2" pitch,
.625" thick
Perforated
Flat Top
—18% open



(E)
0.6" pitch,
.344" thick
Flush Grid
—28% open

You may find it helpful to make a photo copy of this and facing page, mark-up the drawings, fill in quote request information and fax it to us. For application assistance or to discuss design alternatives, please feel free to call one of our sales engineers.

Series 899, Tabletop Chain type Belts

Belt Materials:

Acetal and Stainless Steel

Common Belt Types:

(P)
Straight
running
chain



(Q)
Side
flexing
chain



Quote Request Information:

Item No _____

Item Quantity—identical units _____

Series (810 or 899) _____

Overall Length—L—feet, inches
(For 899, specify turns, if needed) _____

Overall Belt/Chain Width—W—inches
(For 810: 12, 18 & 24"—preferred widths) _____

Belt/Chain Material _____

Belt/Chain Type _____

Belt Speed—Feet per Minute
(For variable speed, give Min. & Max.) _____

Infeed Elevation—J—inches _____

Discharge Elevation—K- inches _____

Plant Electrical Power
(Volts, Phase, Hertz) _____

Conveyor subject to regular washdown? _____ No, _____ Yes

Product description & sizes _____

Product Transfer Rate—Pounds per Hour..... _____

Product Density—Pounds per Cubic Foot..... _____

How will product be loaded onto this conveyor? _____

How will product be taken away from this conveyor? _____

Options Required: (Common options shown on page 22)

- | | |
|--|--|
| <input type="checkbox"/> Side Rails, _____" high | <input type="checkbox"/> Belt Scraper |
| <input type="checkbox"/> Back Stop | <input type="checkbox"/> Top Cover, _____" high |
| <input type="checkbox"/> Drip Pan | <input type="checkbox"/> Discharge Chute |
| <input type="checkbox"/> Discharge Slide | <input type="checkbox"/> Foot Rests |
| <input type="checkbox"/> Casters | <input type="checkbox"/> Work Shelves/Tables* |
| <input type="checkbox"/> Hopper, _____" high | <input type="checkbox"/> Alternate Drive Location* |

* Please describe

Kamflex Corporation • 555 Kimberly Drive • Carol Stream, IL 60188 • USA
Phone: 800-323-2440 or 630-682-1555 • Fax: 630-682-9312 • E-Mail: kamflex@kamflex.com
Visit us at our website: www.kamflex.com

Stainless Steel Wire Belt Conveyors

These conveyors can withstand very high or low product temperatures, allow maximum airflow around the product, and can be easily rinsed through and sanitized. The belts are made from stainless steel wires or rods. Typical belt styles include interwoven loops, flat wire, straight rods (with or without overlay), and balanced weave. These conveyors are positively sprocket-driven, using stainless steel or molded urethane sprockets.

Features and Benefits:

- **More Sanitary—**
- Standoffs on legs with angled end-caps
- “Tool-free” removable side rails
- 304 or 316 stainless frames, polished to a No. 4 finish
- Continuous TIG welds—ground & polished

Better Functionality—

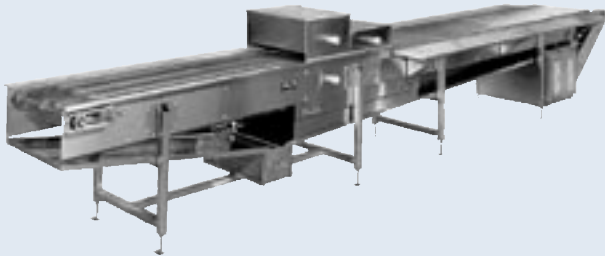
- Stainless steel bearing housings with no-re-lube inserts
- 2-inch square tubing supports
- 12-gauge formed frames
- 10-gauge formed motor platforms

Typical Options:

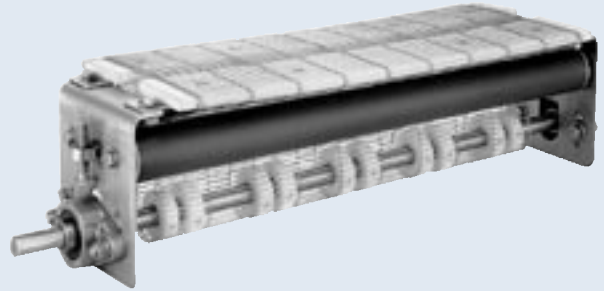
Common options include side rails, feed hopper, top covers, catch pans, belt scrapper, discharge chute, casters, work shelves, transfer plates, and hydraulic motor drive.



Wire Belt Conveyors Examples



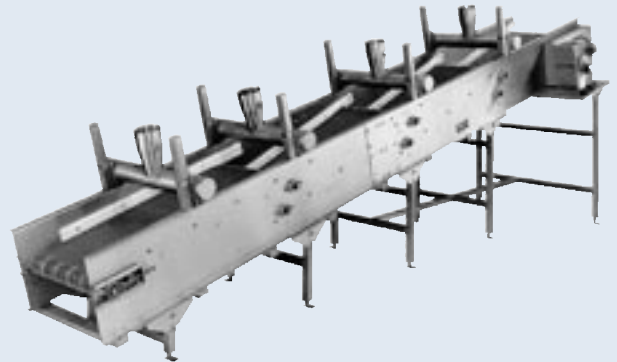
Serial No. 7938: Stainless wire rod belt conveyor with rinse & dry chambers and work shelves for handling drug solution pouches.



Serial No. 92991: A short wire belt transfer section with nose bars at both ends. Slave driven and used for transferring small products between two conveyors.



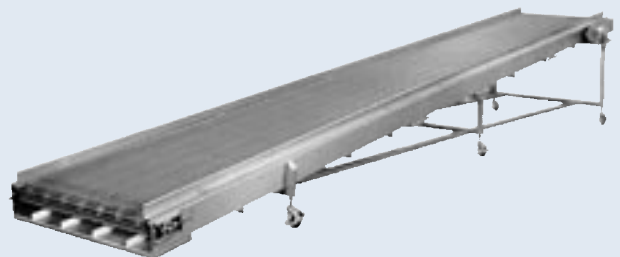
Serial No. 83241: Combination straight & turn wire belt conveyor, using rod type belt with mesh overlay in a snack food application.



Serial No. 88255: A multi-section, cascading wire belt conveyor with blowers & air knives for dewatering fish prior to packaging



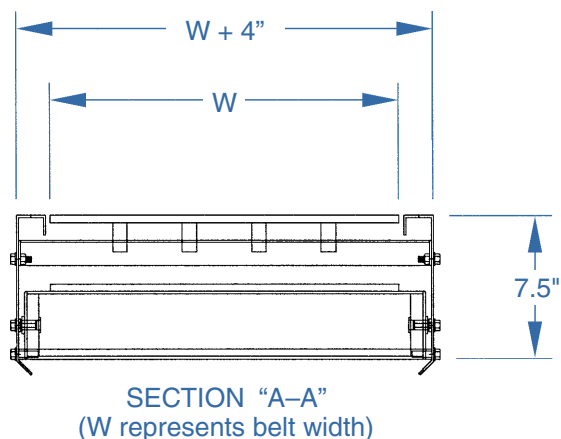
Serial No. 8070: Interwoven loop type wire belt conveyor with work shelves for preparing serving trays of Hors D'oeuvres & loading into freezer.



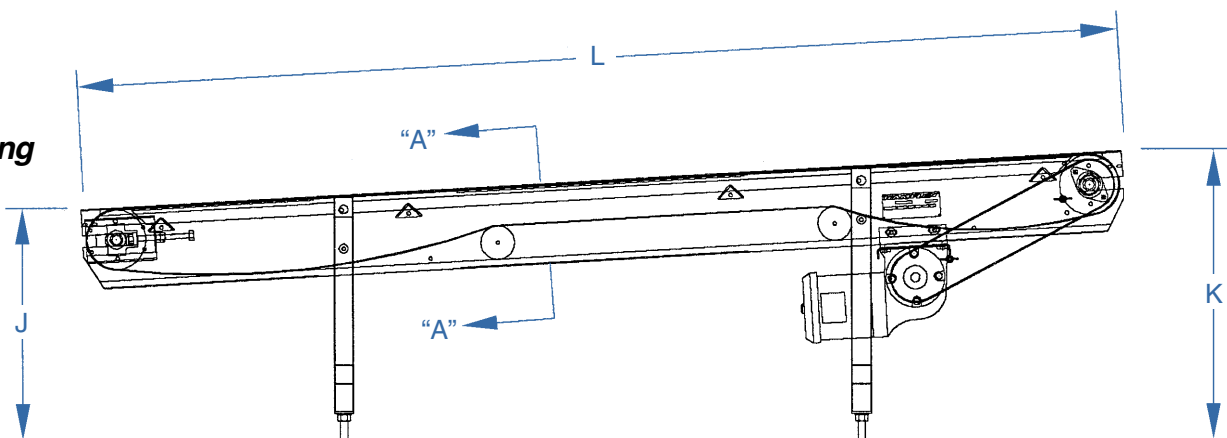
Serial No. 83240: A flat wire belt (1/2 x 1 mesh) conveyor on casters, for transfer of various snack foods.

Wire Belt Conveyors Typical Design Specifications

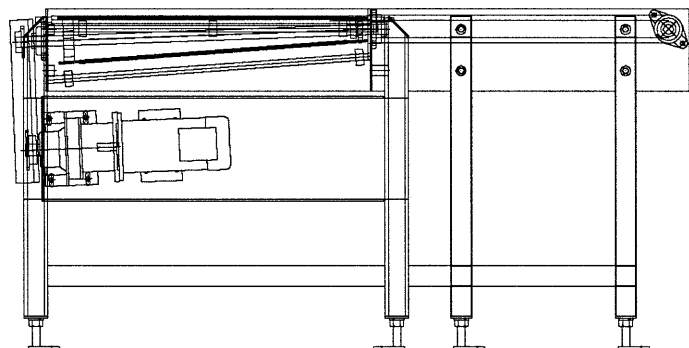
** Dimensions and proportions shown are typical, but may vary to suit application. Design specifications subject to change without notice.*



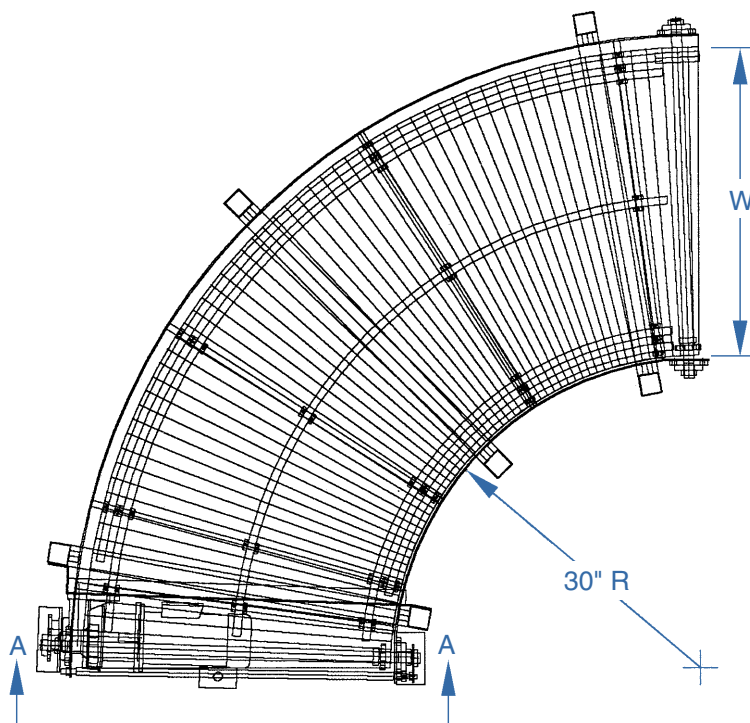
**Series 731,
Straight Running
or Straight-
Plus-Turn
Wire Belt
Conveyor**



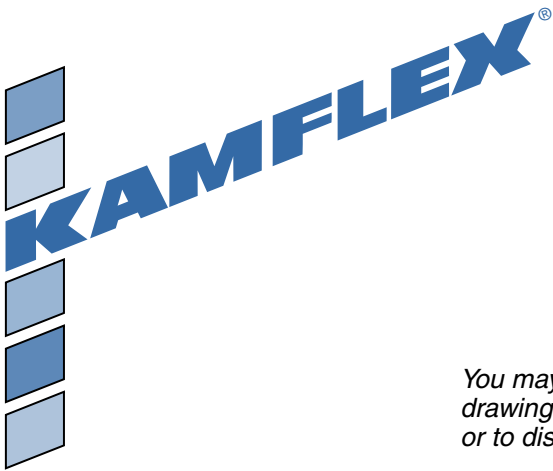
**Series 732, Wire Belt Turn Conveyor (Stand
alone turns—45, 90 & 180 degrees)**



VIEW "A-A", DISCHARGE END



Wire Belt Conveyors Typical Design Specifications



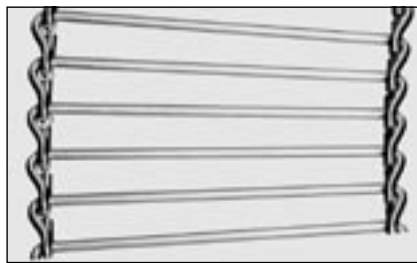
You may find it helpful to make a photo copy of this and facing page, mark-up the drawings, fill in quote request information and fax it to us. For application assistance or to discuss design alternatives, please feel free to call one of our sales engineers.

Series 731, Straight Running or Straight-Plus-Turn Wire Belts

Common Belt Types:



(A) Wire Loop 3/8" pitch, 0.082" wire, approx. 2-1/2" wide loops.



(B) Straight Rod, Constant Radius (30" inside radius). 5/8" inside pitch, 7 gage wire rods. This belt is also available with a wire mesh overlay to handle very small products.



(C) Straight Rod. 5/8" pitch. 7 gage wire rods.



(D) Flat Wire. 1/2" x 1" grid, 3/8" high x 0.046" thick flat wire with connecting rods on 1" pitch.

Quote Request Information:

Item No _____

Item Quantity—identical units _____

Series (731 or 732) _____

Overall Length—L—feet, inches
(Specify turns, if needed) _____

Overall Belt Width—W—inches
(12, 18 & 24"—preferred widths) _____

Belt Type _____

Belt Speed—Feet per Minute
(For variable speed, give Min. & Max.) ... _____

Infeed Elevation—J—inches _____

Discharge Elevation—K- inches _____

Plant Electrical Power
(Volts, Phase, Hertz) _____

Conveyor subject to regular washdown? ____ No, ____ Yes

Product description & sizes _____

Product Transfer Rate—Pounds per Hour..... _____

Product Density—Pounds per Cubic Foot..... _____

How will product be loaded onto this conveyor? _____

How will product be taken away from this conveyor? _____

Options Required: (Common options shown on page 22)

- | | |
|---|--|
| <input type="checkbox"/> Side Rails, ____" high | <input type="checkbox"/> Belt Scraper |
| <input type="checkbox"/> Back Stop | <input type="checkbox"/> Top Cover, ____" high |
| <input type="checkbox"/> Drip Pan | <input type="checkbox"/> Foot Rests |
| <input type="checkbox"/> Discharge Slide | <input type="checkbox"/> Work Shelves/Tables* |
| <input type="checkbox"/> Casters | <input type="checkbox"/> Alternate Drive Location* |
| <input type="checkbox"/> Hopper, ____" high | |

* Please describe

Kamflex Corporation • 555 Kimberly Drive • Carol Stream, IL 60188 • USA
Phone: 800-323-2440 or 630-682-1555 • Fax: 630-682-9312 • E-Mail: kamflex@kamflex.com
Visit us at our website: www.kamflex.com

Storage Conveyors (with Plastic or Fabric Belting) Overview



Storage Conveyors

These conveyors are essentially large, product storage chambers with a moving belt serving as the chamber floor. Primarily used to provide a dynamic buffer between processing and packaging areas by regulating product flow and surges caused by downstream equipment. Typical sizes range from 4-10 ft. belt width, 3-6 ft. high sides, and 10-60 ft. lengths. Systems often include ancillary conveyors and PLC controls.

Preferred belting for these conveyors is a heavy duty, molded plastic belt with large drive sprockets to provide adequate torque transmission under heavy loads. Belt is supported on longitudinal stainless rails covered with UHMW wear strips. Typical belt speed is 1 to 4 feet per minute, either constant or variable.

Features and Benefits:

More Sanitary—

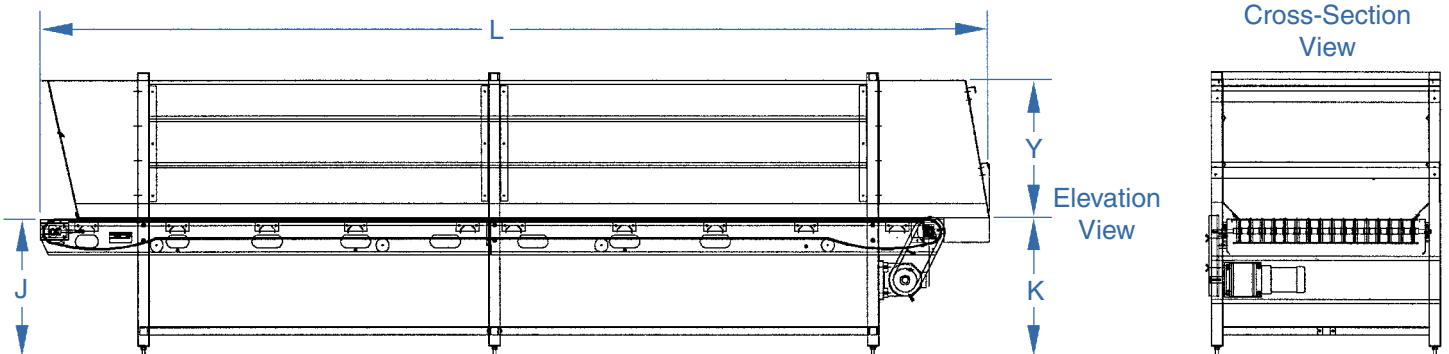
- 304 or 316 stainless frames, polished to a No. 4 finish
- Continuous TIG welds—ground & polished

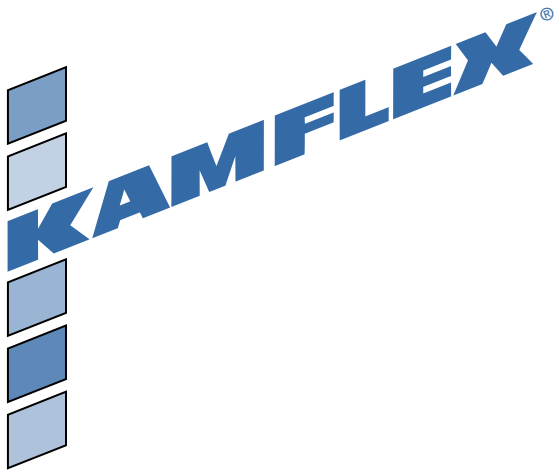
Better Functionality—

- Vacuum breakers (with fabric belt)
- Stainless steel square tubing supports
- 12-gauge formed frames
- 10-gauge formed motor platforms
- Stainless steel pulleys (fabric belts)
- Stainless steel square shafts (molded plastic belts)

Typical Options:

Common options include variable speed drives, catch pans, belt scrapper, and discharge chute.





Vertical Belt Conveyors (with Plastic Belting) Overview

Vertical Belt Conveyors

These vertical belt conveyors are appropriate for many applications where multiple product drop points are not required. In many instances, vertical belt conveyors provide significant sanitation, cost, maintenance, and/or floor space advantages over bucket elevators.

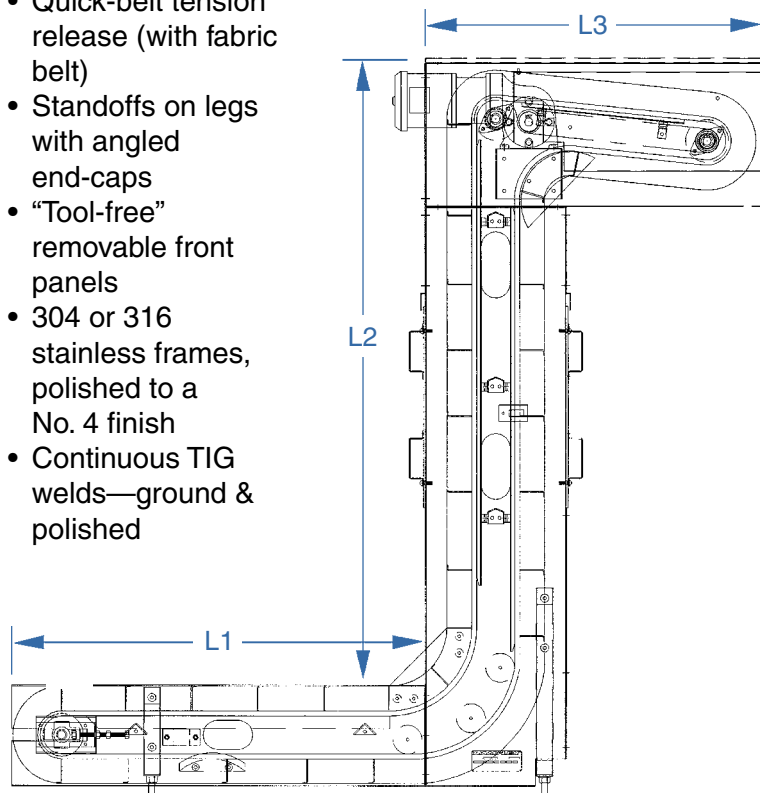
Preferred belt for these conveyors is a plastic belt with scooped cleats (our Series 810 vertical belt conveyor). Approximate product transfer rates at 80 FPM belt speed, with four-inch scooped cleats on eight inch centers, are as follows:

Belt Width:	12"	18"	24"
Cubic ft. per hour:	240	360	480

Features and Benefits:

More Sanitary—

- Quick-belt tension release (with fabric belt)
- Standoffs on legs with angled end-caps
- “Tool-free” removable front panels
- 304 or 316 stainless frames, polished to a No. 4 finish
- Continuous TIG welds—ground & polished



Better Functionality—

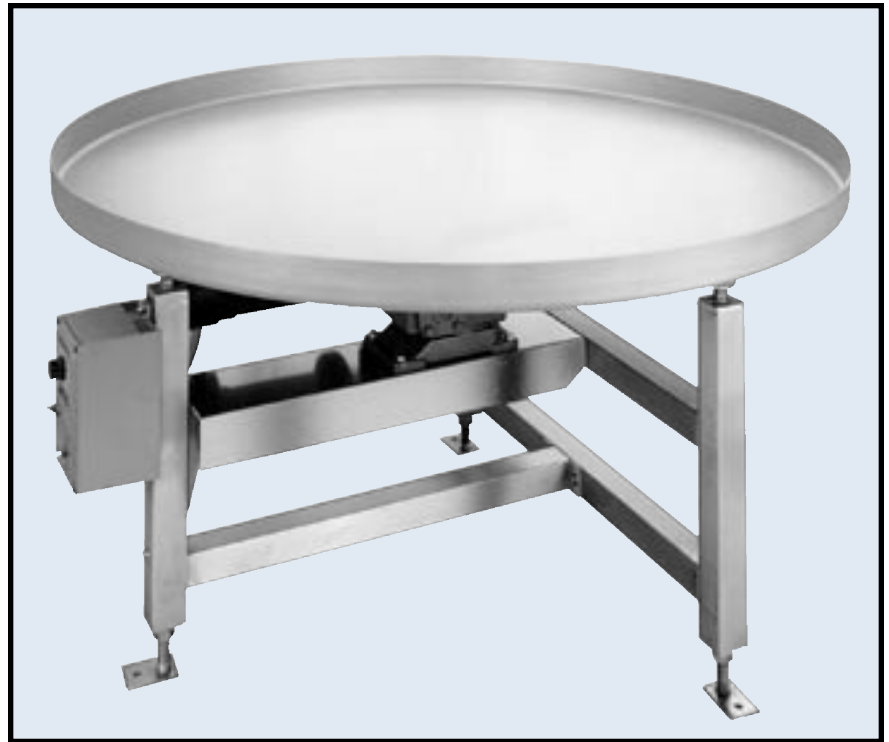
- Stainless steel bearing housings with no-re-lube inserts
- Vacuum breakers (with fabric belt)
- 2-inch square tubing supports
- 12-gauge formed frames
- 10-gauge formed motor platforms
- Stainless steel pulleys (standard)

Typical Options:

Common options include feed hopper, top covers, catch pans, discharge chute, motorized pulley and hydraulic motor drive.



These units are used for product accumulation, manual packaging and case filling applications. Typically, product is transferred from packaging or bagging machine to this turn table via a cleated belt conveyor, and operators around turn table place it in cases. The circular top is one-piece, 12 gage stainless steel formed by metal spinning process with integral flanges or dished contour, resulting in a more sanitary design.



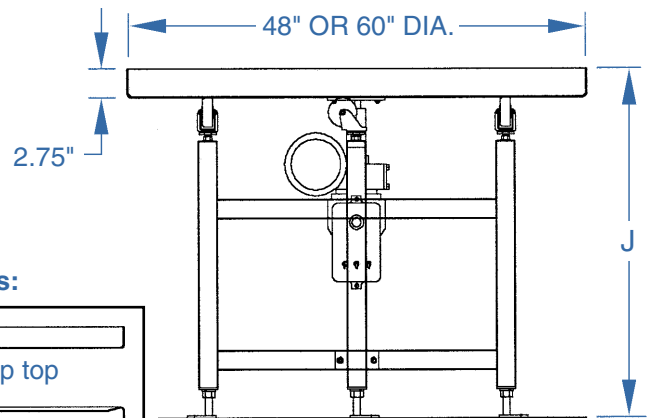
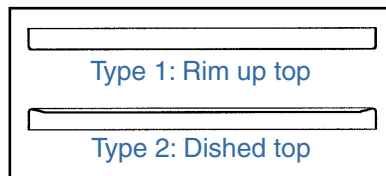
In a somewhat related design variation, we also build rotary tables with flat, thick UHMW plastic tops and a set of product guides for applications involving accumulation or unscrambling of glass or plastic bottles—please see photo no. 87249 on page 20.

Series 901 Turn Tables are available in three versions, depending on drive mechanism:

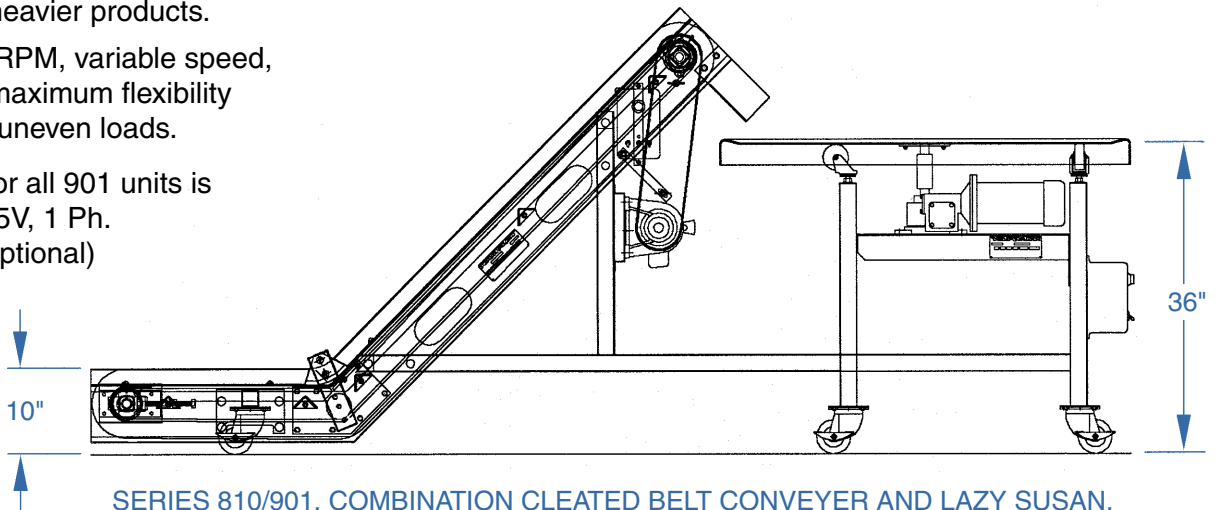
- 901 A: 1.8 RPM, friction wheel drive, for light products.
- 901 B: 6 RPM constant speed direct drive for heavier products.
- 901 C: 1.5 to 6 RPM, variable speed, direct drive for maximum flexibility under heavy or uneven loads.

Standard power for all 901 units is 1/4 or 1/2 HP, 115V, 1 Ph. (3-Phase drives optional)

Top Types:



SERIES 901, LAZY SUSAN



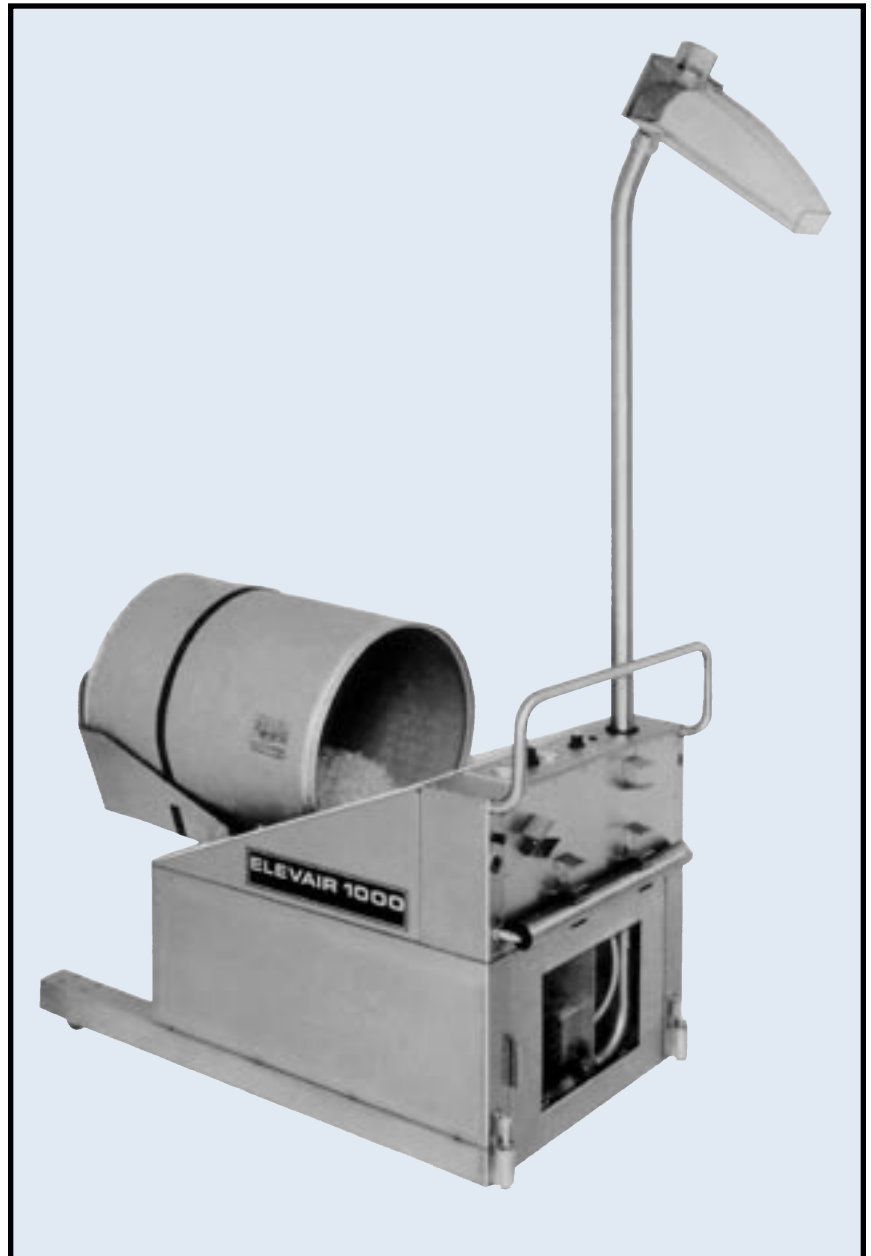
SERIES 810/901, COMBINATION CLEATED BELT CONVEYER AND LAZY SUSAN.

An air operated conveyor for transfer of capsules, caplets, tablets and other small, light products. Available with automatic barrel tilt, hopper vibrator and level control.

Elevair body and transfer pipes are made from polished 304 stainless steel, with a food grade ABS inlet hopper. The unit is easy to clean, and all product contact areas meet FDA requirements for direct product contact. It is portable with retractable foot locks.

Power requirements are 115 Volts, 1 Ph, 60 Hz, 5 Amps and compressed air at 100 psi, 15 cfm.

Typical transfer rates for tablets and capsules range from 10,000 to 25,000 per minute, depending on product size, shape and weight. Inlet hopper height is 19" and standard discharge height is 7'- 6". The barrel tilt mechanism handles 22" dia. x 30" height barrels. The unit can be modified for specific applications requiring different parameters. Also, we can furnish a demonstration unit for a two week field trial for a fee, that can be credited against purchase price.



OPTIONS



HOPPER VIBRATOR.



HOPPER LEVEL CONTROL

utilizing infra-red photo-sensor mounts on hopper of the receiving machine and detects product level. On demand, it starts and stops the Elevair to deliver product as needed.



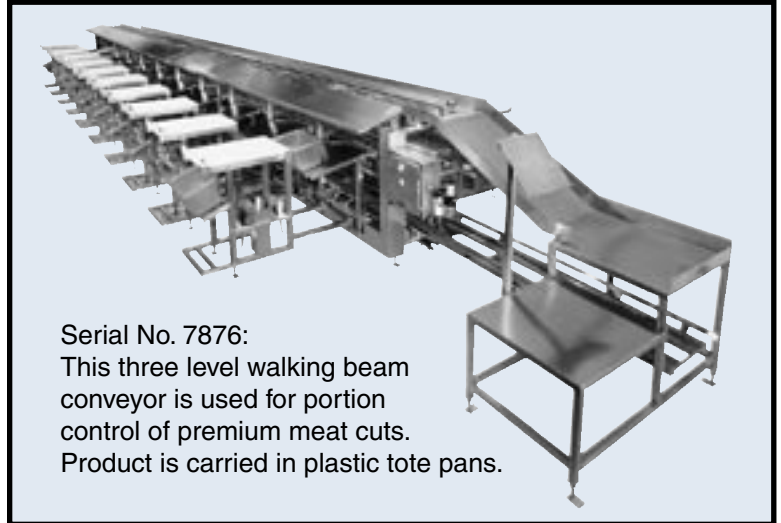
AUTOMATIC BARREL TILT.

Special Purpose Systems Examples

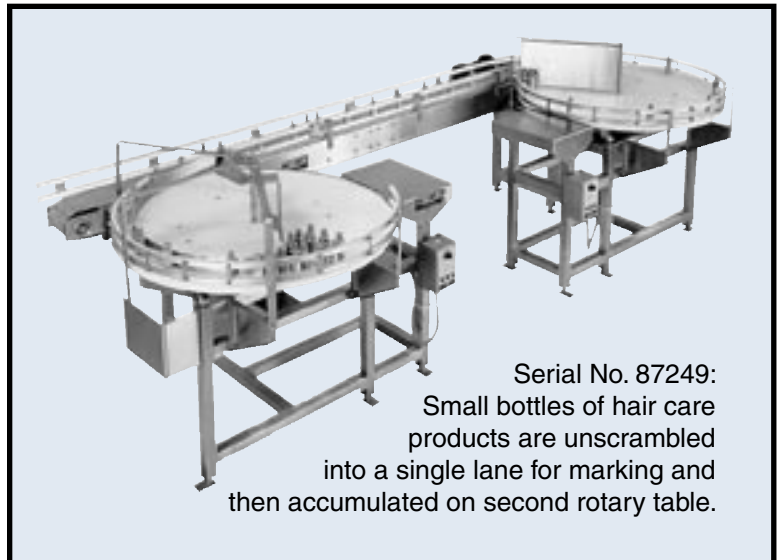
Our customers are part of rapidly growing, dynamic industries: constantly introducing new products, processes and packages. In response to their needs, Kamflex continues to develop innovative new products and expand existing product lines.

Kamflex is often selected to design and build special purpose equipment that go beyond conventional conveyors or processing equipment.

We work with our customers in a creative partnership to develop practical solutions to many challenging applications. The units shown here are a few typical examples of such efforts that often involve thinking outside the box. Our purpose here is to give you an overview of our capabilities and perhaps help you consider some unconventional solutions to your most challenging applications.



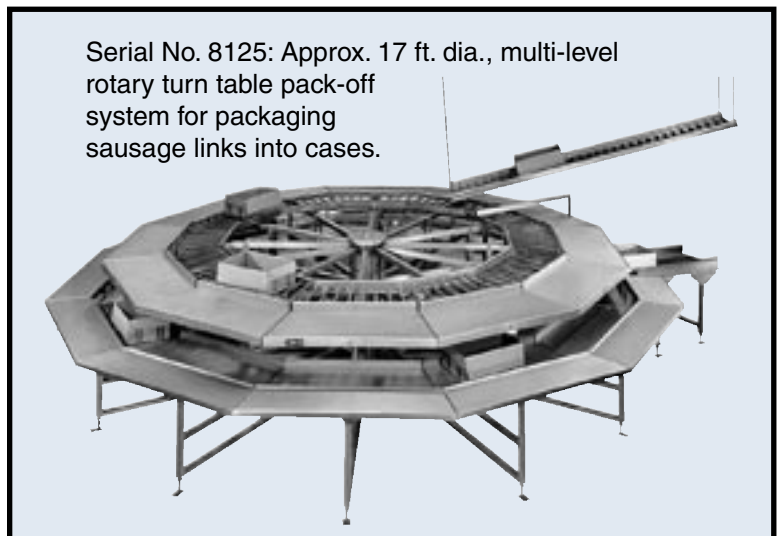
Serial No. 7876:
This three level walking beam conveyor is used for portion control of premium meat cuts. Product is carried in plastic tote pans.



Serial No. 87249:
Small bottles of hair care products are unscrambled into a single lane for marking and then accumulated on second rotary table.

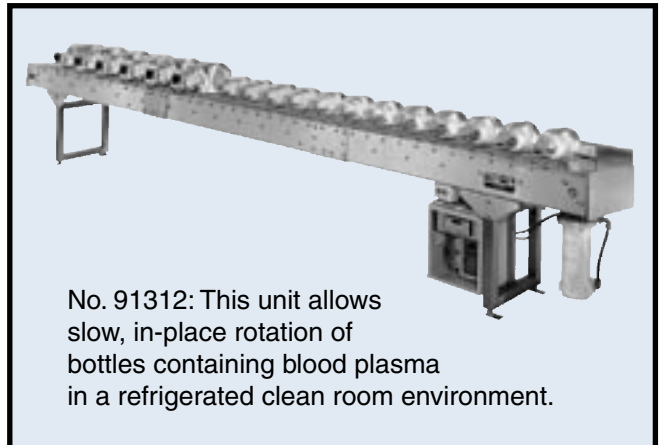
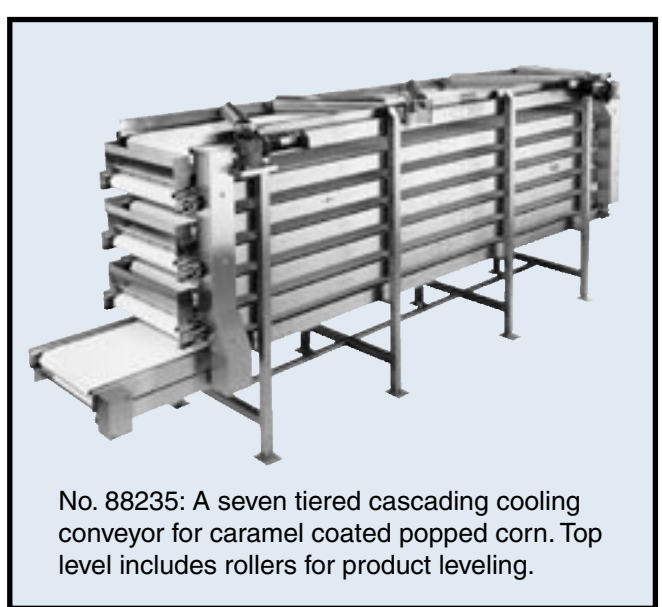
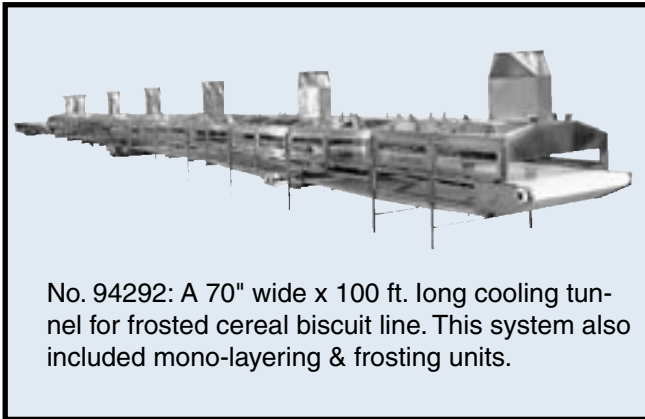
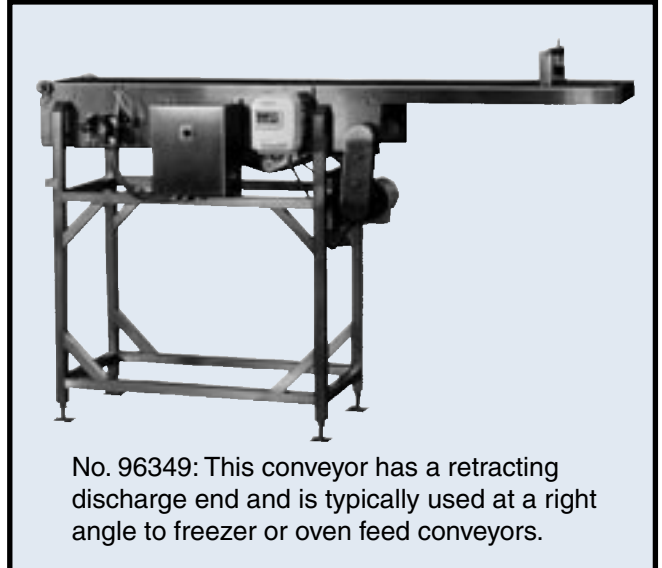
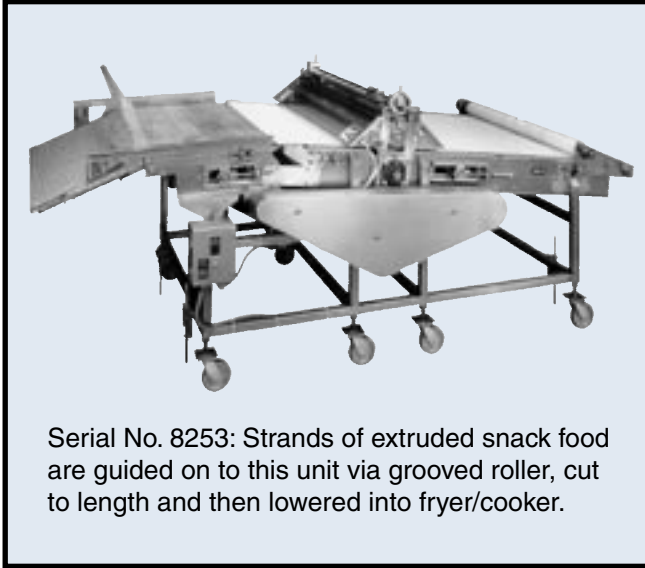


Serial No. 93105:
This unit, for in-line cleaning of bread pans, uses various brushes, air knives and vacuum, then sprays a liquid release agent.



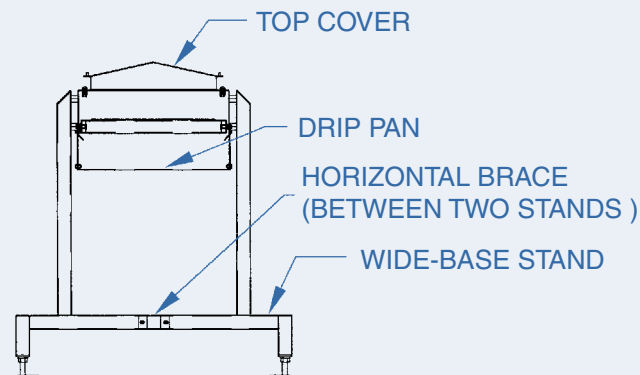
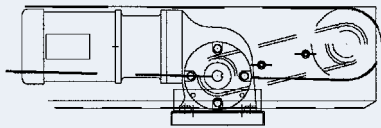
Serial No. 8125: Approx. 17 ft. dia., multi-level rotary turn table pack-off system for packaging sausage links into cases.

Special Purpose Systems Examples

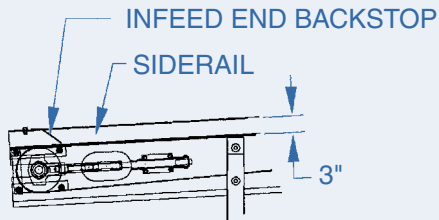
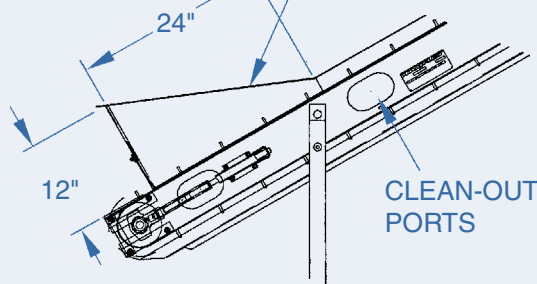


Common Optional Items

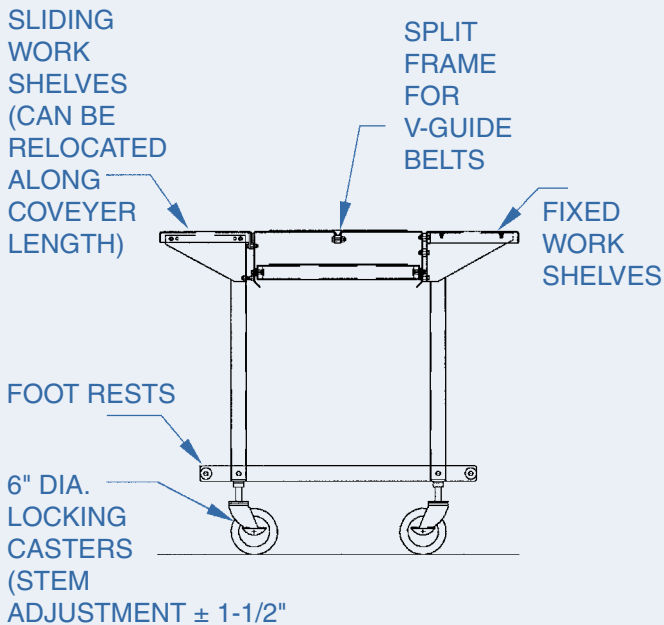
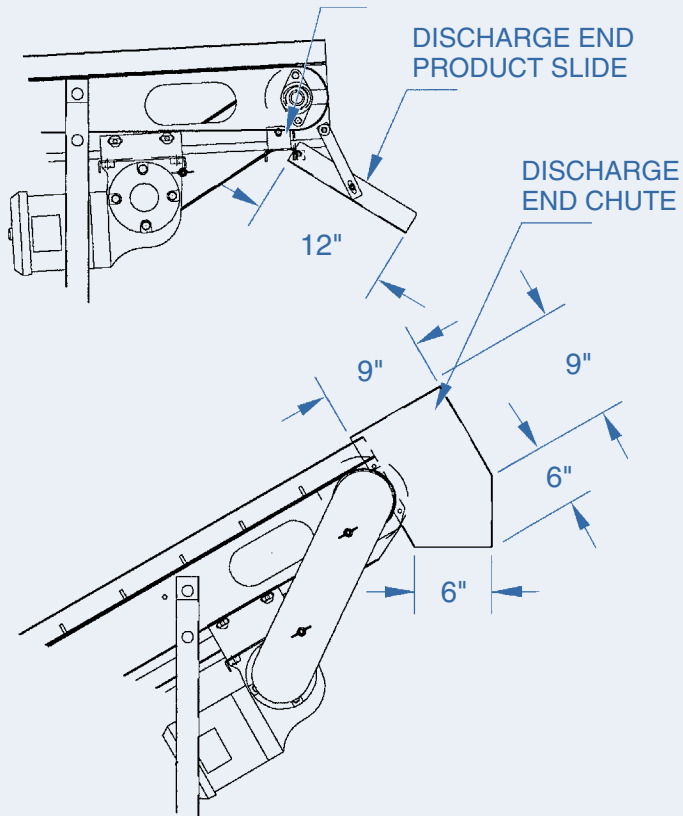
SIDE MOUNTED DRIVE LOCATION



INFEED HOPPER (WITH FLEXIBLE FLAPPER FOR CLEATED BELT)



BELT SCRAPER AT DISCHARGE END, UNDERSIDE





KAMFLEX[®]

Stainless Steel Sanitary Conveyors
for Food & Pharmaceutical Industries



Regulatory Acceptance:

A broad range of Kamflex conveyor models are accepted by USDA for use in federally inspected food plants. Kamflex also builds equipment to meet even more stringent USDA-3A dairy standards for conveyors used in cheese processing industry. In pharmaceutical/surgical products industries, Kamflex conveyors are used in applications with up to Class 100 clean room standards.

Quotations:

Nearly all Kamflex equipment is custom built, thus prices are quoted based upon your specifications. Please gather all relevant application information—length, width, elevations, product type and flow rates etc.—and then contact one of our sales engineers for application assistance and a firm quotation.

For “the cleanest way from point A to point B” please contact one of our Sales Engineers.

Kamflex Corporation

555 Kimberly Drive
Carol Stream, IL 60188-1893 • USA

Phone: 800-323-2440 or 630-682-1555

Fax: 630-682-9312

E-Mail: kamflex@kamflex.com

Visit us at our website:

www.kamflex.com

“Kamflex” is a registered trade mark of Kamflex Corporation
© Copyright 2005, Kamflex Corporation
Specifications subject to change without notice





KAMFLEX[®]

Stainless Steel Sanitary Conveyors
for Food & Pharmaceutical Industries

Please request our Catalog no. 2005B for
"Quick-Ship Program"— conveyor types shown
below, and available in various common
sizes for *shipment within ten working days.*



Series 901



Series 705



Series 704



Series 810



Series 899



Series 811

Kamflex Corporation
555 Kimberly Drive, Carol Stream, IL 60188



_____	PRESORT STANDARD
_____	U. S. POSTAGE
_____	PAID
_____	PERMIT NO. 616